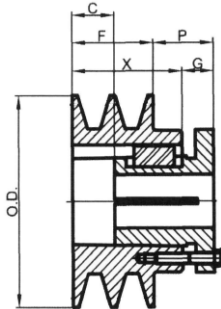


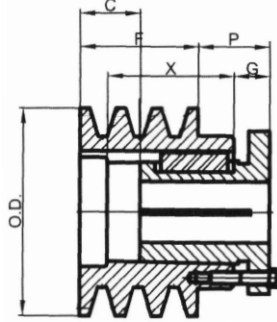


# Split-Barrel Bushed Sheaves - Stock Dimensions

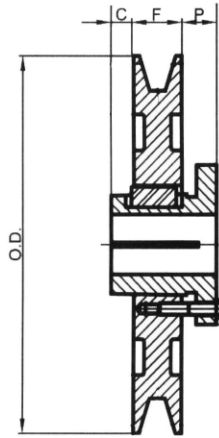
conventional v-belt drives for use with "A" and "B" belts



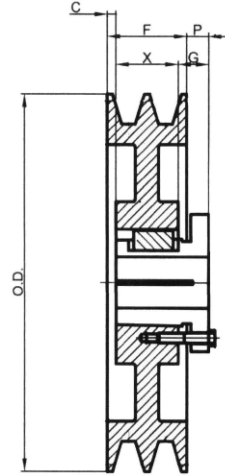
TYPE F



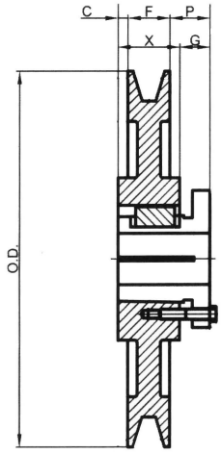
TYPE G



TYPE I



TYPE J



TYPE K

Figure Following Letter in Column Headed "TYPE" in Table Below Indicates Sheave Construction  
1 - Solid, No Web. 2 - Web. 3 - Arms

O.D.	DATUM DIAMETER		1 GROOVE								2 GROOVE							
	A BELTS	B BELTS	PART NUMBER	F = 1							PART NUMBER	F = 1-3/4						
				BUSH	TYPE	P	C	G	X	WT. LBS		BUSH	TYPE	P	C	G	X	WT. LBS
3.75	3.0	3.4	1TB34	P1	F1	1-1/16	1/8	5/8	1-7/16	2.0	2TB34	P1	F1	1-1/16	7/8	5/8	2-3/16	2.9
3.95	3.2	3.6	1TB36	P1	F1	1-1/16	1/8	5/8	1-7/16	2.3	2TB36	P1	F1	1-1/16	7/8	5/8	2-3/16	3.8
4.15	3.4	3.8	1TB38	P1	F1	1-1/16	1/8	5/8	1-7/16	2.6	2TB38	P1	G1	5/8	7/16	--	1-5/16	3.0
4.35	3.6	4.0	1TB40	P1	I1	5/8	5/16	--	--	2.1	2TB40	P1	G1	5/8	7/16	--	1-5/16	3.8
4.55	3.8	4.2	1TB42	P1	I1	5/8	5/16	--	--	2.4	2TB42	P1	G1	5/8	7/16	--	1-5/16	3.9
4.75	4.0	4.4	1TB44	P1	I1	5/8	5/16	--	--	2.8	2TB44	P1	J1	3/16	--	5/8	1-5/16	3.9
4.95	4.2	4.6	1TB46	P1	I1	5/8	5/16	--	--	3.1	2TB46	P1	J1	3/16	--	5/8	1-5/16	4.5
5.15	4.4	4.8	1TB48	P1	I1	5/8	5/16	--	--	3.5	2TB48	P1	J1	3/16	--	5/8	1-5/16	5.3
5.35	4.6	5.0	1TB50	P1	I1	5/8	5/16	--	--	3.9	2TB50	P1	J1	3/16	--	5/8	1-5/16	5.6
5.55	4.8	5.2	1TB52	P1	I1	5/8	5/16	--	--	4.1	2TB52	P1	J1	3/16	--	5/8	1-5/16	6.1
5.75	5.0	5.4	1TB54	P1	I1	5/8	5/16	--	--	4.6	2TB54	P1	J1	3/16	--	5/8	1-5/16	6.5
5.95	5.2	5.6	1TB56	P1	I1	5/8	5/16	--	--	5.1	2TB56	P1	J1	3/16	--	5/8	1-5/16	7.4
6.15	5.4	5.8	1TB58	P1	I1	5/8	5/16	--	--	5.6	2TB58	P1	J1	3/16	--	5/8	1-5/16	8.0
6.35	5.6	6.0	1TB60	P1	I2	5/8	5/16	--	--	6.0	2TB60	P1	J1	3/16	--	5/8	1-5/16	8.9
6.55	5.8	6.2	1TB62	P1	I2	5/8	5/16	--	--	5.5	2TB62	P1	J2	3/16	--	5/8	1-5/16	7.6
6.75	6.0	6.4	1TB64	P1	I2	5/8	5/16	--	--	5.8	2TB64	P1	J2	3/16	--	5/8	1-5/16	7.8
6.95	6.2	6.6	1TB66	P1	I2	5/8	5/16	--	--	5.9	2TB66	P1	J2	3/16	--	5/8	1-5/16	8.3
7.15	6.4	6.8	1TB68	P1	I2	5/8	5/16	--	--	6.1	2TB68	P1	J2	3/16	--	5/8	1-5/16	8.8
7.35	6.6	7.0	1TB70	P1	K3	25/32	5/32	5/8	1-5/16	6.4	2TB70	Q1	J2	3/4	--	3/4	1-3/4	11.1
7.75	7.0	7.4	1TB74	P1	K3	25/32	5/32	5/8	1-5/16	7.3	2TB74	Q1	J2	3/4	--	3/4	1-3/4	11.5
8.35	7.6	8.0	1TB80	P1	K3	25/32	5/32	5/8	1-5/16	7.8	2TB80	Q1	J2	3/4	--	3/4	1-3/4	12.8
8.95	8.2	8.6	1TB86	P1	K3	25/32	5/32	5/8	1-5/16	8.6	2TB86	Q1	J2	3/4	--	3/4	1-3/4	16.0
9.35	8.6	9.0	1TB90	P1	K3	25/32	5/32	5/8	1-5/16	8.9	2TB90	Q1	J3	3/4	--	3/4	1-3/4	15.1
9.75	9.0	9.4	1TB94	P1	K3	25/32	5/32	5/8	1-5/16	9.1	2TB94	Q1	J3	3/4	--	3/4	1-3/4	15.5
11.35	10.6	11.0	1TB110	P1	K3	25/32	5/32	5/8	1-5/16	11.1	2TB110	Q1	J3	3/4	--	3/4	1-3/4	18.9
12.75	12.0	12.4	1TB124	Q1	K3	1-1/8	3/8	3/4	1-3/4	17.8	2TB124	Q1	J3	3/4	--	3/4	1-3/4	21.1
13.95	13.2	13.6	1TB136	Q1	K3	1-1/8	3/8	3/4	1-3/4	18.2	2TB136	Q1	J3	3/4	--	3/4	1-3/4	23.0
15.75	15.0	15.4	1TB154	Q1	K3	1-1/8	3/8	3/4	1-3/4	20.3	2TB154	Q1	J3	3/4	--	3/4	1-3/4	24.8
16.35	15.6	16.0	1TB160	Q1	K3	1-1/8	3/8	3/4	1-3/4	22.0	2TB160	Q1	J3	3/4	--	3/4	1-3/4	27.0
18.75	18.0	18.4	1TB184	Q1	K3	1-1/8	3/8	3/4	1-3/4	27.5	2TB184	Q1	J3	3/4	--	3/4	1-3/4	32.3
20.35	19.5	20.0	1TB200	Q1	K3	1-1/8	3/8	3/4	1-3/4	27.2	2TB200	Q1	J3	3/4	--	3/4	1-3/4	42.3
25.35	24.5	25.0	1TB250	Q1	K3	1-1/8	3/8	3/4	1-3/4	42.4	2TB250	Q1	J3	3/4	--	3/4	1-3/4	50.3
30.35	29.5	30.0	1TB300	Q1	K3	1-1/8	3/8	3/4	1-3/4	56.0	2TB300	Q1	J3	3/4	--	3/4	1-3/4	68.8

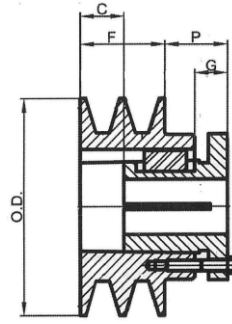
All Dimensions in Inches

Weights are approximate pounds excluding bushing

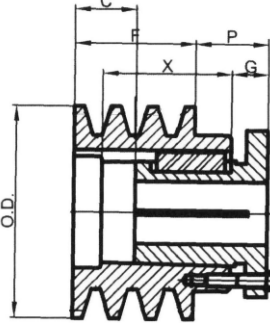


# Split-Barrel Bushed Sheaves - Stock Dimensions

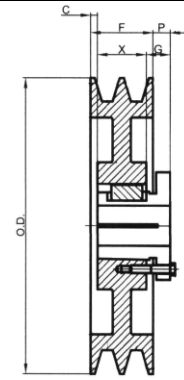
conventional v-belt drives for use with "A" and "B" belts



TYPE A



TYPE G



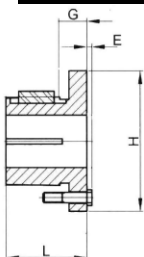
TYPE J

Figure Following Letter in Column Headed "TYPE" in Table Below Indicates Sheave Construction  
 1 - Solid, No Web. 2 - Web. 3 - Arms

O.D.	DATUM DIAMETER		3 GROOVE							4 GROOVE						
	A BELTS	B BELTS	PART NUMBER	BUSH	TYPE	F = 2-1/2			WT. LBS	PART NUMBER	BUSH	TYPE	F = 3-1/4			WT. LBS
						P	C	G					P	C	G	
3.75	3.0	3.4	3TB34	P2	A1	1-1/16	5/8	5/8	3.8	4TB34	P2	A1	1-1/16	1-3/8	5/8	4.5
3.95	3.2	3.6	3TB36	P2	A1	1-1/16	5/8	5/8	4.4	4TB36	P2	A1	1-1/16	1-3/8	5/8	5.3
4.15	3.4	3.8	3TB38	P1	G1	5/8	1-3/16	-	3.8	4TB38	P1	G1	5/8	1-15/16	-	4.8
4.35	3.6	4.0	3TB40	P1	G1	5/8	1-3/16	-	4.5	4TB40	P1	G1	5/8	1-15/16	-	5.5
4.55	3.8	4.2	3TB42	P1	G1	5/8	1-3/16	-	4.9	4TB42	P1	G1	5/8	1-15/16	-	5.9
4.75	4.0	4.4	3TB44	P1	J1	0	9/16	5/8	5.1	4TB44	P1	J2	0	1-5/16	5/8	6.5
4.95	4.2	4.6	3TB46	P1	J2	0	9/16	5/8	6.0	4TB46	P1	J2	0	1-5/16	5/8	7.1
5.15	4.4	4.8	3TB48	P1	J2	0	9/16	5/8	6.3	4TB48	P1	J2	0	1-5/16	5/8	7.5
5.35	4.6	5.0	3TB50	P1	J2	0	9/16	5/8	6.9	4TB50	P1	J2	0	1-5/16	5/8	8.3
5.55	4.8	5.2	3TB52	P1	J2	0	9/16	5/8	7.5	4TB52	P1	J2	0	1-5/16	5/8	9.1
5.75	5.0	5.4	3TB54	P1	J2	0	9/16	5/8	8.3	4TB54	P1	J2	0	1-5/16	5/8	9.6
5.95	5.2	5.6	3TB56	P1	J2	0	9/16	5/8	9.0	4TB56	P1	J2	0	1-5/16	5/8	10.6
6.15	5.4	5.8	3TB58	P1	J2	0	9/16	5/8	9.6	4TB58	P1	J2	0	1-5/16	5/8	11.6
6.35	5.6	6.0	3TB60	P1	J2	0	9/16	5/8	10.5	4TB60	P1	J2	0	1-5/16	5/8	11.9
6.55	5.8	6.2	3TB62	P1	J2	0	9/16	5/8	9.4	4TB62	P1	J2	0	1-5/16	5/8	11.1
6.75	6.0	6.4	3TB64	P1	J2	0	9/16	5/8	9.5	4TB64	P1	J2	0	1-5/16	5/8	11.8
6.95	6.2	6.6	3TB66	P1	J2	0	9/16	5/8	10.0	4TB66	P1	J2	0	1-5/16	5/8	12.0
7.15	6.4	6.8	3TB68	P1	J2	0	9/16	5/8	10.4	4TB68	P1	J2	0	1-5/16	5/8	12.5
7.35	6.6	7.0	3TB70	Q1	J2	3/8	3/8	3/4	13.0	4TB70	Q1	J2	0	3/4	3/4	15.3
7.75	6.8	7.4	3TB74	Q1	J2	3/8	3/8	3/4	13.3	4TB74	Q1	J2	0	3/4	3/4	15.3
8.35	7.6	8.0	3TB80	Q1	J2	3/8	3/8	3/4	15.3	4TB80	Q1	J2	0	3/4	3/4	17.0
8.95	8.2	8.6	3TB86	Q1	J2	3/8	3/8	3/4	18.9	4TB86	Q1	J2	0	3/4	3/4	20.8
9.35	8.6	9.0	3TB90	Q1	J3	3/8	3/8	3/4	18.1	4TB90	Q1	J3	0	3/4	3/4	20.6
9.75	9.0	9.4	3TB94	Q1	J3	3/8	3/8	3/4	18.0	4TB94	Q1	J3	0	3/4	3/4	20.1
11.35	10.6	11.0	3TB110	Q1	J3	3/8	3/8	3/4	21.3	4TB110	Q1	J3	0	3/4	3/4	25.8
12.75	12.0	12.4	3TB124	Q1	J3	3/8	3/8	3/4	25.4	4TB124	Q1	J3	0	3/4	3/4	27.5
13.95	13.2	13.6	3TB136	Q1	J3	3/8	3/8	3/4	27.4	4TB136	Q1	J3	0	3/4	3/4	31.5
15.75	15.0	15.4	3TB154	Q1	J3	3/8	3/8	3/4	29.8	4TB154	Q1	J3	0	3/4	3/4	36.0
16.35	15.6	16.0	3TB160	Q1	J3	3/8	3/8	3/4	32.0	4TB160	Q1	J3	0	3/4	3/4	39.0
18.75	18.0	18.4	3TB184	Q1	J3	3/8	3/8	3/4	37.8	4TB184	Q1	J3	0	3/4	3/4	44.8
20.35	19.5	20.0	3TB200	Q1	J3	3/8	3/8	3/4	49.9	4TB200	Q1	J3	0	3/4	3/4	57.0
25.35	24.5	25.0	3TB250	Q1	J3	3/8	3/8	3/4	61.0	4TB250	Q1	J3	0	3/4	3/4	69.5
30.35	29.5	30.0	3TB300	Q1	J3	3/8	3/8	3/4	78.5							

All Dimensions in Inches

Weights are approximate pounds excluding bushing



SPLIT BARREL BUSHINGS				
PART NUMBER	DIMENSIONS			
	L	G	E	H
P1	1 - 15/16	5/8	1/4	3
P2	2 - 15/16	5/8	1/4	3
Q1	2 - 1/2	3/4	9/32	4 - 1/8

P1 AND P2 ARE TYPE 1 THRU 1-7/16", TYPE 2 FOR 1-1/2" AND LARGER  
 Q1 BUSHINGS ARE TYPE 1 THRU 2" AND ARE TYPE 2 FOR 2-1/8" AND LARGER



TYPE 1



TYPE 2

SPLIT BARREL BUSHINGS												
PART NUMBER	STOCK BORES											
	1/2	5/8	3/4	7/8	1	1-1/8	1-3/16	1-1/4	1-3/8	1-7/16	1-1/2	1-5/8
P1	X	X	X	X	X	X	X	X	X	X	X	X
P2			X	X	X	X	X	X	X	X	X	X
Q1			X	X	X	X	X	X	X	X	X	X
PART NUMBER	STOCK BORES											
	1-11/16	1-3/4	1-7/8	2	2-1/8	2-3/16	2-1/4	2-3/8	2-7/16	2-1/2	2-5/8	2-11/16
P1	X	X										
Q1	X	X	X	X	X	X	X	X	X	X	X	X